



COMPACT. VERSATILE. MONTAT00L.



**PATENTED ASSEMBLY TOOL FOR
MONTANATHERM® WALL ELEMENTS**

MONTATOOOL

Patented ASSEMBLY TOOL

for MONTANATHERM® wall elements on steel or wood structures, as well as concrete

DESCRIPTION

THE MONTATOOOL ASSEMBLY DEVICE DEVELOPED BY MONTANA ENGINEERS IN COOPERATION WITH PRACTICAL EXPERTS

COMPACT AND EASY TO USE

MONTATOOOL is a assembly device for mounting MONTANATHERM® façade elements. It guarantees easy handling thanks to a telescopic tube and clamping mechanism. Two assembly tools with all the accessories are packed together in a handy plastic box, weighing a total of approximately 16 kg.

VERSATILE

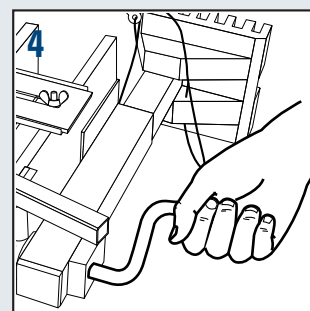
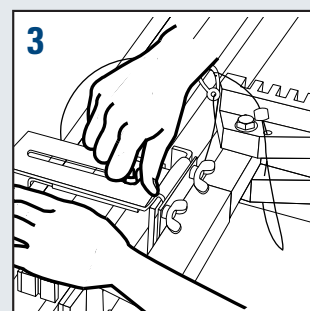
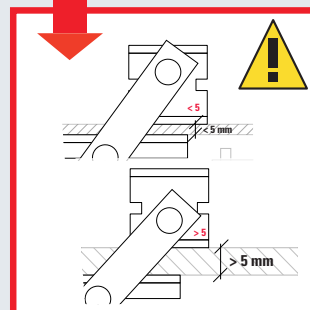
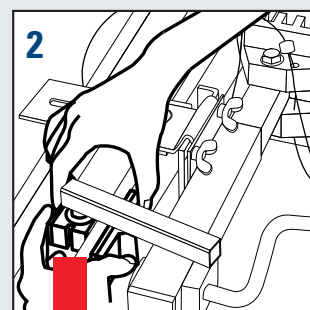
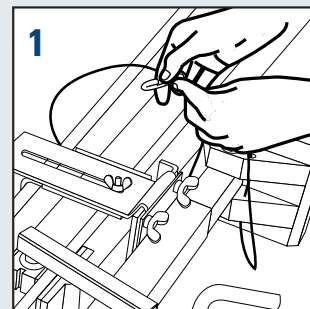
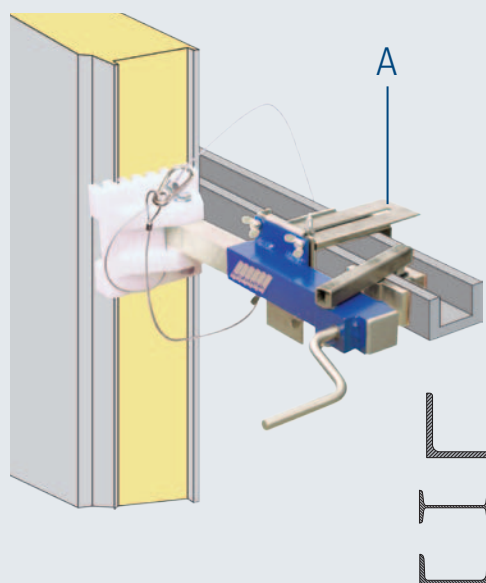
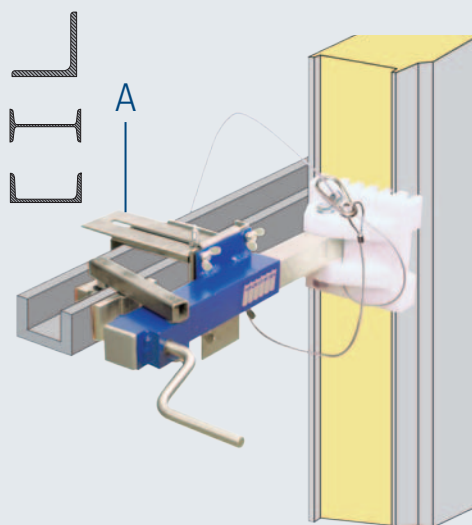
MONTATOOOL is a real multipurpose device. It can be adapted from use on any steel structure to application on a wood structure in next to no time.

The tool can be used for fitting from left to right or vice versa by turning the clamping mechanism. For applications on steel structures, the tool is fitted with an ingenious clamping mechanism which locks onto MONTATOOOL independently. There are two different additional angle irons, ensuring that it can be used on all beam thicknesses. The die element, which is made of tough hard plastic, has spaced grooving to enable the fitting of all MONTANATHERM® wall elements. A securing wire with a snap hook ensures safety on the installation site.

MONTATOOOL – YOUR ADVANTAGES

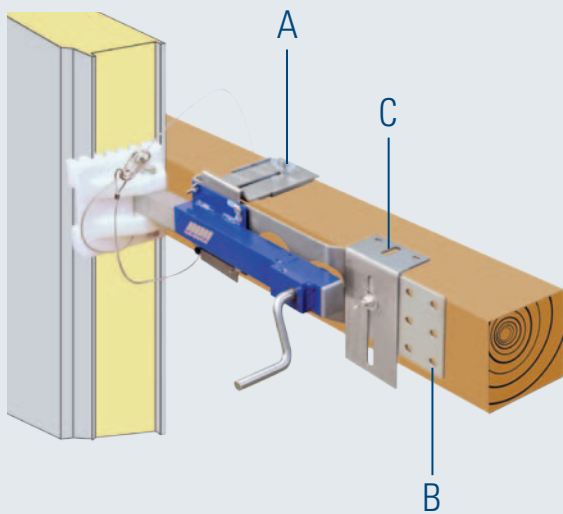
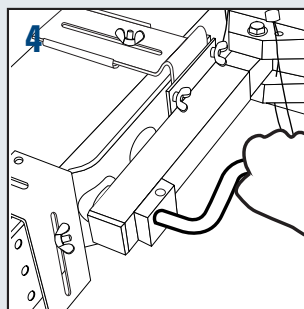
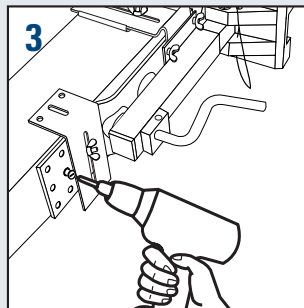
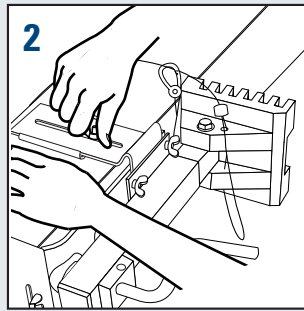
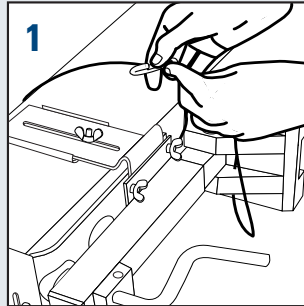
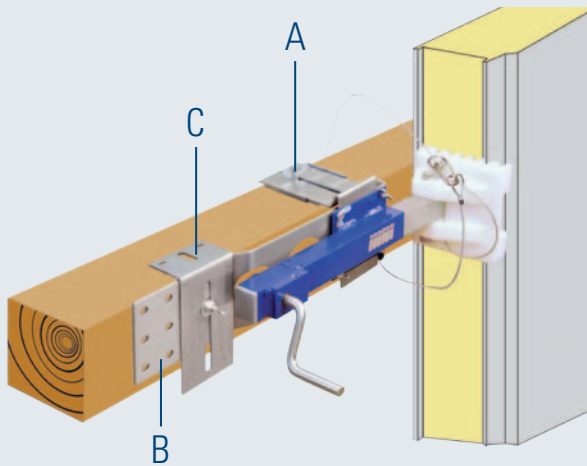
The MONTATOOOL assembly device enables you to work more precisely, quickly and efficiently. The tool pays for itself within a relatively short period of time. Happy fitters, happy customers and shorter installation times create a win-win situation. Why not ask our field staff for a non-binding demonstration of the tool in your region!

STEEL
STRUCTURE

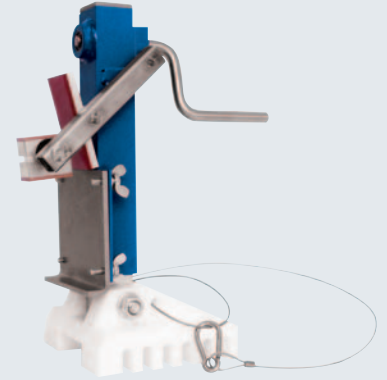


CONTENTS

WOOD
STRUCTURE



SYSTEM
COMPONENTS



2 x

A



2 x

B



2 x

C



4 x



1 x





**MONTANA BUILDING SYSTEMS LTD. –
THE SWISS COMPANY
WITH INTERNATIONAL REFERENCES
IN THE INDUSTRIAL, COMMERCIAL, ADMINISTRATIVE
AND RESIDENTIAL BUILDING SEGMENTS**

Montana Building Systems Ltd. has become synonymous with innovative construction solutions among planners and architects. Many years of experience, a broad product range, a high degree of flexibility and the resources of a multinational group make Montana a top supplier of international calibre. Architects recognised around the world reconcile visual creativity with technical requirements using products from Montana Building Systems Ltd.

Every construction project is a challenge. An experienced, highly competent Montana team ensures the smooth course of consultancy, planning and production up to and including punctual delivery on site.



MONTAFORM® Residential development, Olten (CH)



MONTAWALL® Stade de Suisse, Bern (CH)



MONTALINE® Lehner Versand AG, Schenkön (CH)



PERFORATION Stade de la Maladière, Neuenburg (CH)



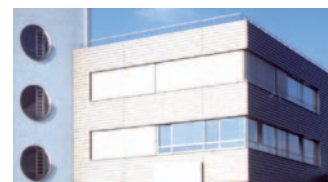
SUPERHOLORIB® Technology Museum, Berlin (D)



SWISS PANEL® Paul Klee Centre, Berne (CH)



MONTANATHERM® Neomat AG, Beromünster (CH)



MONTASTEP® Connect GmbH, Freiburg (D)

In the course of further technological development, we reserve the right to make modifications to our products. The details given in our brochures therefore represent non-binding recommendations. The illustrated designs, details and structural parts are non-binding solution suggestions which have to be checked for correctness depending on the requirements and related to the property in question. Technical details only become subject matter of the contractual agreement through mutual agreement and following our written confirmation. Reproduction and reprinting prohibited.

MONTANA BAUSYSTEME AG
Durisolstrasse 11
CH-5612 Villmergen
Tel. + 41 0 56 619 85 85
Fax + 41 0 56 619 86 10
www.montana-ag.ch
info@montana-ag.ch

**MONTANA SYSTÈMES
DE CONSTRUCTION SA**
CH-1028 Préverenges
Tél. + 41 0 21 801 92 92
Fax + 41 0 21 801 92 93
www.montana-ag.ch
info@montana-ag.ch

MONTANA BAUSYSTEME AG
Zweigniederlassung
D-86845 Grossaitingen
Tel. +49 0 8203 95 90 555
Fax +49 0 8203 95 90 556
www.montana-ag.ch
info@montana-ag.ch