



A Tata Steel Enterprise

## Case Study

# Residential complex, Gelterkinden, Switzerland

**Products:**

1'772 m<sup>2</sup> MONTAFORM® Design Individual MF 50-6/674, Gold brushed;  
of which 540 square meters perforated [↗](#)

**Owner:**

Läckerli Huus AG, 4402 Frenkendorf

**Construction management:**

SOLVO BAUPROJEKT AG, 4144 Arlesheim

**Architect:**

Architekturbüro Staehelin, Gisin + Partner AG, 4053 Basel

**Construction time:**

2023

## Golden play of light

### Golden facade shines in Gelterkinden, Switzerland with MONTAFORM® Design Individual-profiles

A recently completed new construction project in Gelterkinden combines modern living and working with unique design elements. Due to its impressive size and the golden façade made of MONTAFORM® Design Individual-profiles, the building is not only an eye-catcher from the outside: The individually designed cladding, which provides special light effects in sunshine, also serves as a parapet in front of windows and loggias. The perforation and folding of the profiles allow light-flooded interiors, which are at the same time protected from prying eyes.



A good transport connection between the workplace and one's own home is always desirable. This requirement is fulfilled by the special, recently completed new building project in Gelterkinden. On a steep slope and in the immediate vicinity of the train station, a modern multi-purpose building was erected there, which comprises both 22 apartments and offices on an area of over 1,000 square meters. In order to make the facade of the large new building visually appealing and at the same time energy-efficient and sustainable, the architectural office Staehelin, Gisin + Partner decided to use high-quality

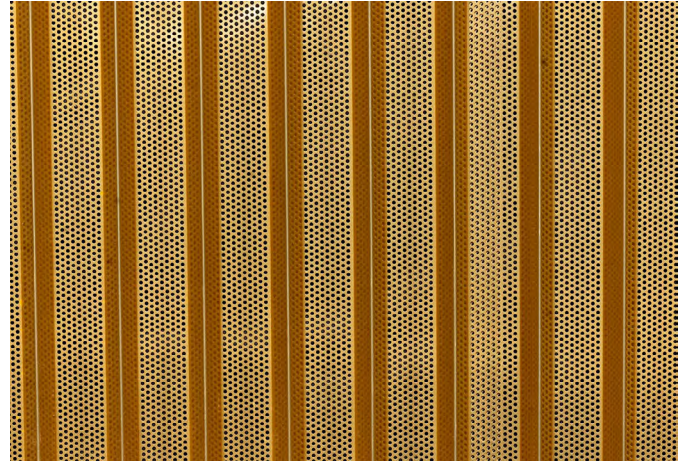
design profiles from Montana Building Systems Ltd. in Villmergen.

#### Uniquely individual building envelope

A large part of the facade - over 1,700 square meters - was fitted with gold-colored MONTAFORM® Design Individual-profiles made of perforated aluminum sheet. These are arranged vertically and were specially developed for special design requirements. With MONTAFORM® Design Individual practically any profile can be produced ex works according to the customer's very personal ideas. Numerous angular

or round shapes are available - as are different types of metal, colors, coatings or perforations. The remaining 540 square meters of the facade in Gelterkinden were executed with the aluminum profile MONTAFORM® Design Individual MF 50-6/674 A.

In the color Gold brushed, all elements give the object a unique appearance and, in combination with the partially perforated profile, provide a special play of light and color, depending on the position of the sun.



The cladding acts as a parapet in front of the windows and loggias of the residential building. The fine perforation pattern allows generous daylight penetration, while the vertical folding of the profiles protects the interior from unwanted views. All in all, the high-quality MONTAFORM® Design Individual-profiles proved to be the ideal solution for this building project: They not only create a special outer shell, but also impress with their high weather resistance, stability and energy efficiency.

**Montana Bausysteme AG**

Durisolstrasse 11  
CH-5612 Villmergen  
info@montana-ag.ch  
www.montana-ag.ch

Montana is a registered trademark of Tata Steel. While care has been taken to ensure that the information contained in this publication is accurate, neither Tata Steel, nor its subsidiaries, accept responsibility or liability for errors or for information which is found to be misleading. Before using products or services supplied or manufactured by Tata Steel and its subsidiaries, customers should satisfy themselves as to their suitability.

**Copyright © 2023 Montana Building Systems Ltd.**