



A Tata Steel Enterprise

Case Study

Baccinex SA, Courroux, Switzerland

Products:

MONTALINE® ML 26/500 F-K, steel with open joint 1'094 m²

Façade construction: :

CR Métallique SA, Porrentruy

Architect:

Arches 2000 SA, Delémont

Year of construction:

2022

Façade cladding reflects corporate dynamics

Baccinex SA's new industrial building in Courroux impresses with an aesthetic and energy-efficient façade

Baccinex SA of Courroux is one of Switzerland's largest Contract Development and Manufacturing Organizations (CDMO) for biopharmaceutical products. Founded in 1999, the company employed only a handful of people in the early years. By 2022 their number had increased to 120 and it became necessary for the company to erect a new industrial building of its own. The dynamics in the company's development are also reflected in the building envelope: As part of the rear-ventilated rainscreen, MONTALINE® steel cladding profiles provide for aesthetics and high energy-efficiency in the desired corporate colours.



Every beginning is difficult. When Baccinex was founded in Courroux in 1999, a great deal of idealism and imagination was called for. It wasn't until five years later, after the premises had been furnished and equipped and the necessary certificates obtained, that the contract manufacturer – known in professional jargon as a Contract Development and Manufacturing Organization (CDMO) – could begin with its actual activity: the aseptic manufacture of liquid and freeze-dried medicines for biopharmaceutical companies. At that time Baccinex SA employed just eight people. 120 people now work for the company, which has experienced a rapid growth in orders in particular in the last six years. Against this backdrop, the construction of an industrial building with floor space of 2,700 square metres also began in 2002 at the Courroux site. The building is intended to be used for the high-quality manufacture of Swiss-made medicines. The company's express wish was for a

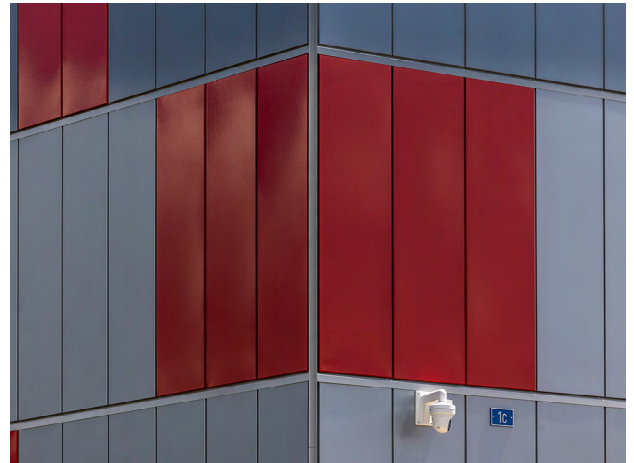
highly energy-efficient and aesthetic façade to be created, which was also to reflect Baccinex's corporate colours and dynamics. Following consultation with the commissioned architect's office "Arches 2000" (Delémont), the choice ultimately fell on a solution with a rear-ventilated rainscreen made of MONTALINE® steel cladding profiles. And not without reason.

Homogeneous appearance without fasteners

Building façades are exposed to widely varying weather conditions and environmental influences. Their quality is therefore fundamental. MONTALINE® cladding profiles from Montana Building Systems Ltd. form the basis for an elegant façade on which no fastening points are visible. They are available in steel and aluminium and are characterised by their homogeneous, flat appearance. The integrated, double-sided bent end creates the character

of an expensive flat panel façade. MONTALINE® profiles are available in various widths up to 600 millimetres as well as with a concave or convex rounding, opening up interesting design options for planners. MONTALINE® façade claddings stand out visually from trapezoidal or corrugated profiles due to their delicate execution, with or without a joint. Due to their elegance they are often used in aesthetically sophisticated industrial and administration buildings.

For the new building in Courroux, almost 1,100 square metres of the façade cladding were erected from 500 millimetre-wide MONTALINE® panels with the designation ML 26/500 F-K (with open joint) in the two different colours "white aluminium" (RAL 9006) and "carmine red" (RAL 3002). This combination corresponds to the company's corporate design specifications.



The playful arrangement of the different steel profiles provides for a dynamic appearance that sets itself pleasantly apart from conventional industrial hall façades. For Baccinex, it was also important that the building envelope should reflect the company's precision and technical know-how. After all, medicinal products are manufactured inside the building according to the highest international quality standards and the safety of these products must not be in any doubt. Standing confidently in the light, the steel façade makes the building look like a "strongroom" and its homogeneous, elegant appearance also meets all aesthetic demands for precision and technology.

Fast installation included

A further important aspect of the project in Courroux was the rapidity of the installation. In particular where industrial buildings are concerned, delays can lead to painful economic losses in production. However,

Montana Building Systems Ltd. convinced with an effective solution here, too: their clever MONTAFIX® fastening system. As a substructure, it makes a perfect supplement to the rear-ventilated metal façade. With MONTAFIX®, the façade panels can simply be hooked into the substructure without penetrations, enabling a fast and economical installation period. This solution results in a rear ventilation space between the insulation and cladding that also reliably regulates the moisture balance in the building structure.

Thanks to the good pre-planning and the smooth interaction of everyone who participated in the construction, the new building project in Courroux was completed on time in just a few months. Since then, not only the 120 Baccinex employees are delighted about their new working conditions in a highly energy-efficient, modern industrial building. The message that the building transmits with its façade is also clear for neighbours and potential

customers: a company that believes in itself and on which one can rely is domiciled here. All the time and one hundred percent.

Montana Bausysteme AG

Durisolstrasse 11
CH-5612 Villmergen
info@montana-ag.ch
www.montana-ag.ch

Montana is a registered trademark of Tata Steel. While care has been taken to ensure that the information contained in this publication is accurate, neither Tata Steel, nor its subsidiaries, accept responsibility or liability for errors or for information which is found to be misleading. Before using products or services supplied or manufactured by Tata Steel and its subsidiaries, customers should satisfy themselves as to their suitability.

Copyright © 2023 Montana Bausysteme AG